

OLYMPUS[®]

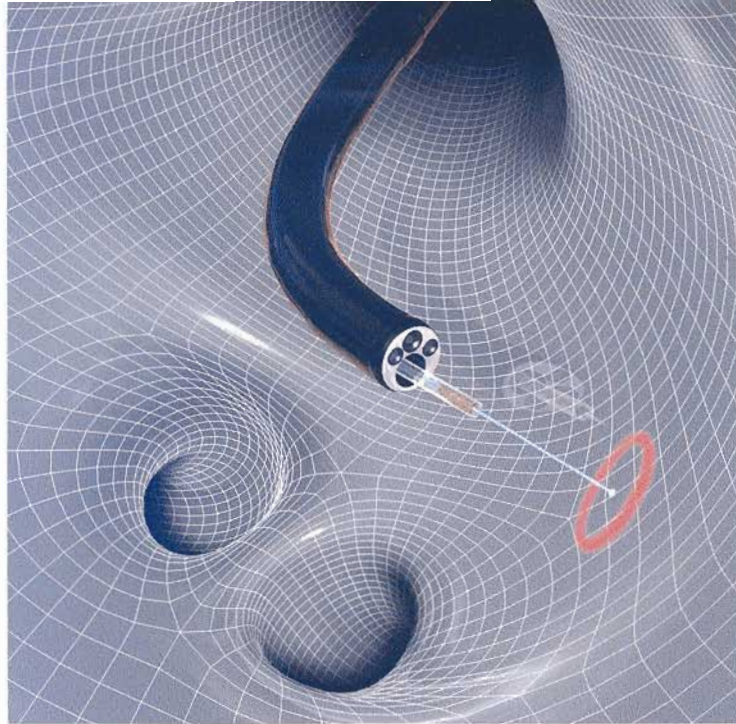
EVIS
LUCERA

Dedicated treatment scope with expanded channel diameter
and a newly developed CCD for improved image quality

EVIS LUCERA Bronchovideoscope

OLYMPUS **BF** TYPE **1T260**





With its capacious 2.8 mm wide channel and high-performance CCD, this scope offers outstanding instrumentation capability and enhanced image quality in a slim 5.9 mm diameter design

Taking advantage of Olympus's leading edge technologies, the BF-1T260 delivers today's most sophisticated observation and instrumentation capabilities. To enhance image quality and improve diagnosis, the BF-1T260 incorporates a newly developed high-performance CCD that delivers higher resolution and a larger image size. To accommodate a wider range of instruments, the channel diameter has been expanded to 2.8 mm — wide enough to accept an ultrasonic probe for endobronchial ultrasonography — while the width of the distal end has been kept down to 5.9 mm, ensuring excellent insertability.

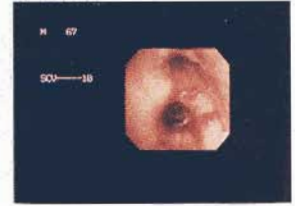


- Enhanced observation capability with significantly improved image quality and enlarged image size.

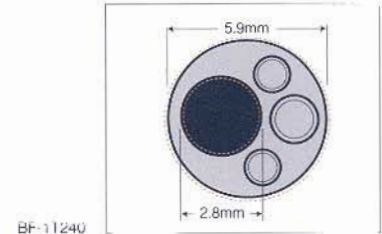
BF-1T260



BF-1T240



- Wide 2.8 mm channel diameter improves suctioning of blood, as well as smoke from laser procedures.



BF-1T240

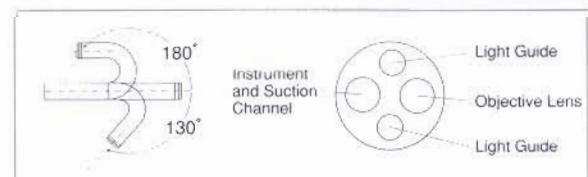
- The channel can accommodate an ultrasonic probe for endobronchial ultrasonography.



- Offers excellent instrumentation capability including compatibility with semiconductor lasers, as well as high-frequency electric current and YAG lasers.

■ Specifications

	Field of view	120°
Optical System	Direction of view	0° (Forward viewing)
	Depth of field	3~100mm
	Distal end outer diameter	5.9mm
Insertion Tube	Insertion tube outer diameter	6.0mm
	Working length	600mm
	Channel inner diameter	2.8mm
Instrument Channel	Minimum visible distance	3mm from distal end
	Bending Section	Angulation range
High Frequency Compatibility		YES
Laser Compatibility		Nd:Yag, 810nm diode
Total Length		870mm



Specifications, design and accessories are subject to change without any notice or obligation on the part of the manufacturer.

OLYMPUS

OLYMPUS OPTICAL CO., LTD.
2951 Ishikawa-cho, Hachioji-shi, Tokyo 192-8507, Japan
OLYMPUS OPTICAL CO. (EUROPA) GMBH.
Postfach 10 49 98, 20034 Hamburg / Wendenstrasse 14-18, 20097 Hamburg, Germany
OLYMPUS AMERICA INC.
2 Corporate Center Drive, Melville, N.Y. 11747-3157, U.S.A.
OLYMPUS LATIN AMERICA, INC.
6100 Blue Lagoon Drive, Suite 390 Miami, Florida 33126-2087, U.S.A.
OLYMPUS KEYMED
Keymed House, Stock Road, Southend-on-Sea, Essex SS2 5QH, England

OLYMPUS SINGAPORE PTE LTD.
491B River Valley Road #12-01/04, Valley Point Office Tower, Singapore 248373
OLYMPUS HONG KONG AND CHINA LIMITED.
Room 1520-1527, Ocean Centre, 5 Canton Road, Tsimshatsui, Kowloon, Hong Kong
OLYMPUS BEIJING REPRESENTATIVE OFFICE
Room 1401, East Tower, Gong Yuan No.8 Royal Palace, No.6 Gou Yuanjijie, JiaoGuoMeiNeli, DongCheng District, Beijing, 100005, China
OLYMPUS MOSCOW LIMITED LIABILITY COMPANY
117071, Moscow, Malaya Kaluzhskaya 19, bld. 1, fl.2, Russia
OLYMPUS AUSTRALIA PTY. LTD.
31 Gilby Road, Mount Waverley, VIC., 3149, Australia

www.olympus.com

Printed in Japan R349SB-0303