

OLYMPUS

Your Vision, Our Future

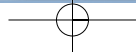
EVIS EXERA Video Colonoscope

CF-2T160I/L



FROM SCOPES TO
ENDOSCOPY

Powerful dual-channel performance

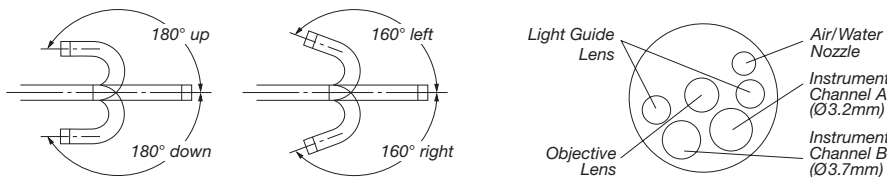


Suction capability & powerful treatment with two independent channels: EVIS EXERA Video Colonoscope CF-2T160I/L



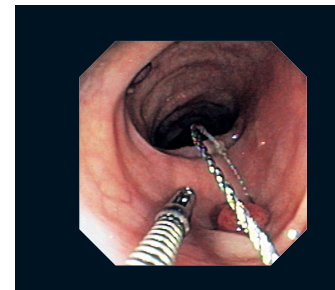
- Dual channel design, with a 3.7 mm diameter channel for suction, and a 3.2 mm diameter channel for insertion of an Endo-Therapy accessory, ensures powerful suction capability and allows both channels to be used for Endo-Therapy accessories.
- 3 mm minimum depth of field for close-up observation.
- Extra-wide 140° field of view allows easier observation of a wider area of the site.
- 13.7 mm outer diameter insertion tube.
- Compatible with laser probes for expanded treatment versatility.
- Fully compatible with the CV-160/145/140/100/E.
- Scope ID function stores individual scope information and displays it on the monitor to facilitate endoscopy suite management.

CF-2T160I/L



Specifications

Optical System	Field of view	140°
	Direction of view	0° (Forward viewing)
	Depth of field	3 to 100 mm
Distal End	Outer diameter	13.8 mm
Insertion Tube	Outer diameter	13.7 mm
Bending Section	Range of distal end bending	Up 180°, Down 180°, Left 160°, Right 160°
Working Length		L: 1665 mm, I: 1330 mm
Total Length		L: 2005 mm, I: 1656 mm
Instrument Channel	Inner diameter	A: 3.7 mm, B: 3.2 mm
	Minimum visible distance	5 mm from the distal end
	Endo-Therapy accessory entrance/exit position in field of view	



Specifications and design are subject to change without any obligation on the part of the manufacturer.